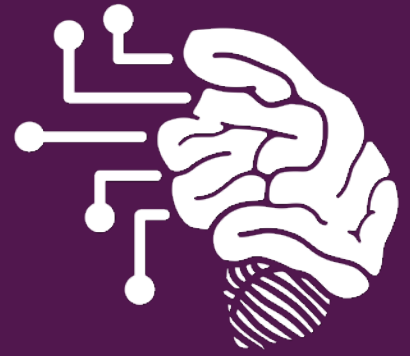




Using AI & Large Language Models (LLMs) to Understand Health Information



OpenNotes has launched a new educational resource to help patients, care partners, patient advocates, and clinicians with using AI to understand health information. The resource was written at 5th-8th grade reading levels, and is freely available in **English** and **Spanish**.

The resource offers practical, plain-language guidance about:

- What AI and large language models (LLMs) are
- How patients are using AI to understand health information
- Privacy and confidentiality concerns
- Bias and limitations in AI tools
- Tips for responsible use

Who may find this helpful?

- Patient advocacy organizations
- Patient and family advisory councils (PFACs)
- Patients and care partners
- Clinicians and healthcare organizations
- Health educators and researchers

Please share

OpenNotes encourages organizations and educators to share and adapt these materials for educational use.

Key messages

- AI tools may support understanding, but they can make mistakes.
- People should think carefully about privacy before sharing health information with AI tools.
- AI tools are not substitutes for professional medical advice or care.
- Open communication between patients, care partners, and clinicians remains essential.

About OpenNotes: Based at Beth Israel Deaconess Medical Center, OpenNotes is an academic lab studying, spreading, and teaching transparent communication between patients, care partners, and clinicians.

Learn more at opennotes.org

Contact: For more information about this resource, contact Liz Salmi, Communications & Patient Initiatives Director at lsalmi@bidmc.harvard.edu

Creative Commons: Except where otherwise noted, the content by OpenNotes is licensed under a Creative Commons Attribution 4.0 International License.

